

Catch weight prepackages

Catch weight prepackages are prepackages,

- which each weigh a different quantity of product *and*
- are made up without the purchaser being present

Typical examples are:

- packs of cheese or meat wrapped with film
- cups with meat salad

Catch weight prepackages



Catch weight prepackages



Catch weight prepackages

- The weight of every prepackage is individually measured, printed onto a label and stuck onto the prepackage.
- Usually on that occasion the selling price and the unit price are also labelled.

Catch weight prepackages

- **Catchweight products:** Prepackages not made up in a predetermined constant quantity. (WELMEC 6.1 No. 11)
- **Nominal weight:** The weight indicated on the prepackage, i.e. the quantity of product which the prepackage is deemed to contain. (WELMEC 6.1 No. 67)
- **Gross weight:** The total weight of a prepackage, including its container or wrapping. (WELMEC 6.1 No. 39)
- **Actual weight:** The weight of the quantity of product in a prepackage without its container or wrapping. (WELMEC 6.1 No. 66)
- **Tare weight:** The weight of the packing material (container or wrapping)

Catch weight prepackages

Requirements at prepacking

- The prepackage must be labelled with the **net** quantity of the product,
(i.e. it is prohibited to include the weight of the packing material!).
- Therefore before weighing, the balance must be tared with the weight of packing material to be used!
- → That is the problem !

Catch weight prepackages

- The actual enforcement statistic shows that there is as yet a problem with the correct filling. This gives cause for complaints.

The table gives the actual results 2011 for Germany.

Product group	Number of packages checked	Number of nonconforming packages	Percentage of nonconforming packages
Fruit and vegetable	5.710	341	6,0
Meat and sausage products	35.334	2.352	6,7
Other foodstuff	16.660	1.316	7,9
Sum	57.704	4.009	6,9

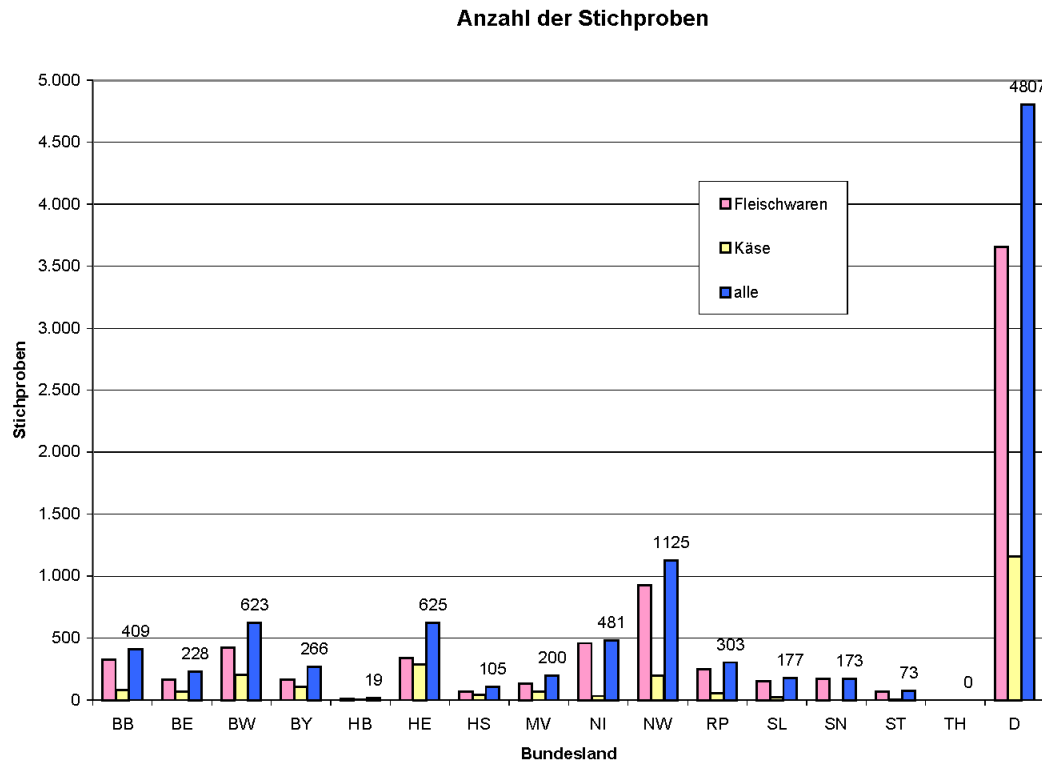
- **The next foils show some results of a special action in Germany in the year 2005:**

Catch weight prepackages

LME - Berlin

Sonderaktion 2005: Prüfungen von Fertigpackungen ungleicher Nennfüllmenge

Abb. 1



Auswertg_D_2005_920_und_930.xls

Stichpr

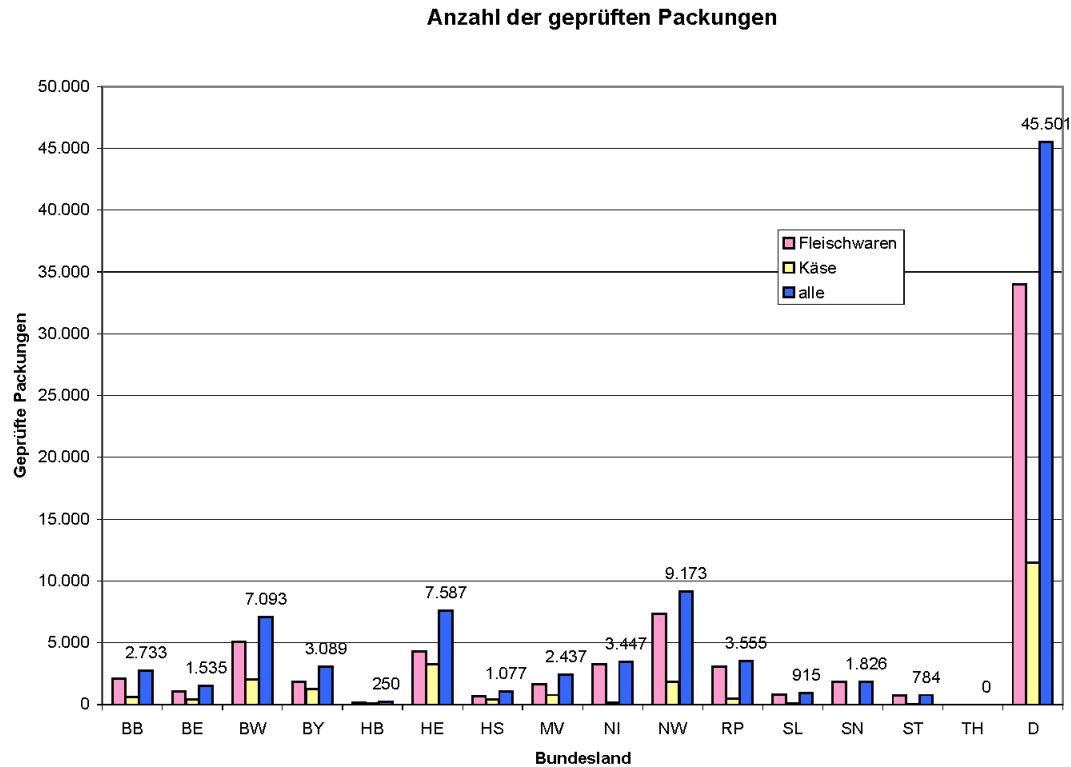
27.09.2006

Catch weight prepackages

LME - Berlin

Sonderaktion 2005: Prüfungen von Fertigpackungen ungleicher Nennfüllmenge

Abb. 3



Auswertg_D_2005_920_und_930.xls

Summe_n

27.09.2006

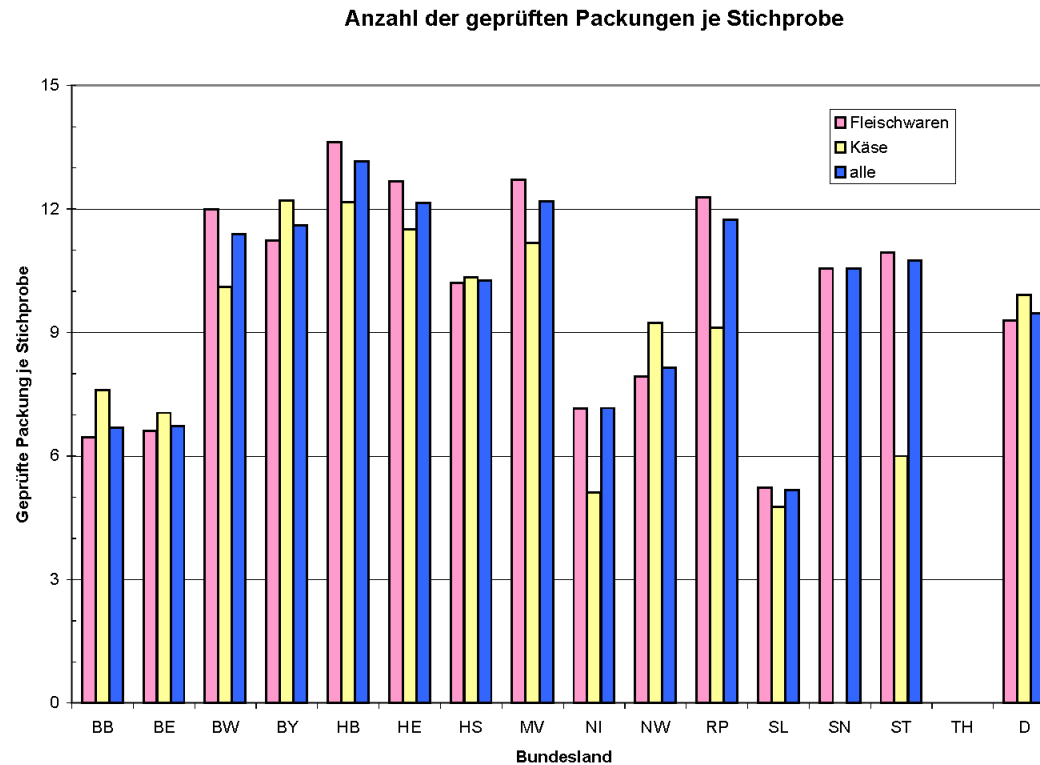
Number of checked packages

Catch weight prepackages

LME - Berlin

Sonderaktion 2005: Prüfungen von Fertigpackungen ungleicher Nennfüllmenge

Abb. 5



Auswertg_D_2005_920_und_930.xls

Gepr. FP je Stichprobe

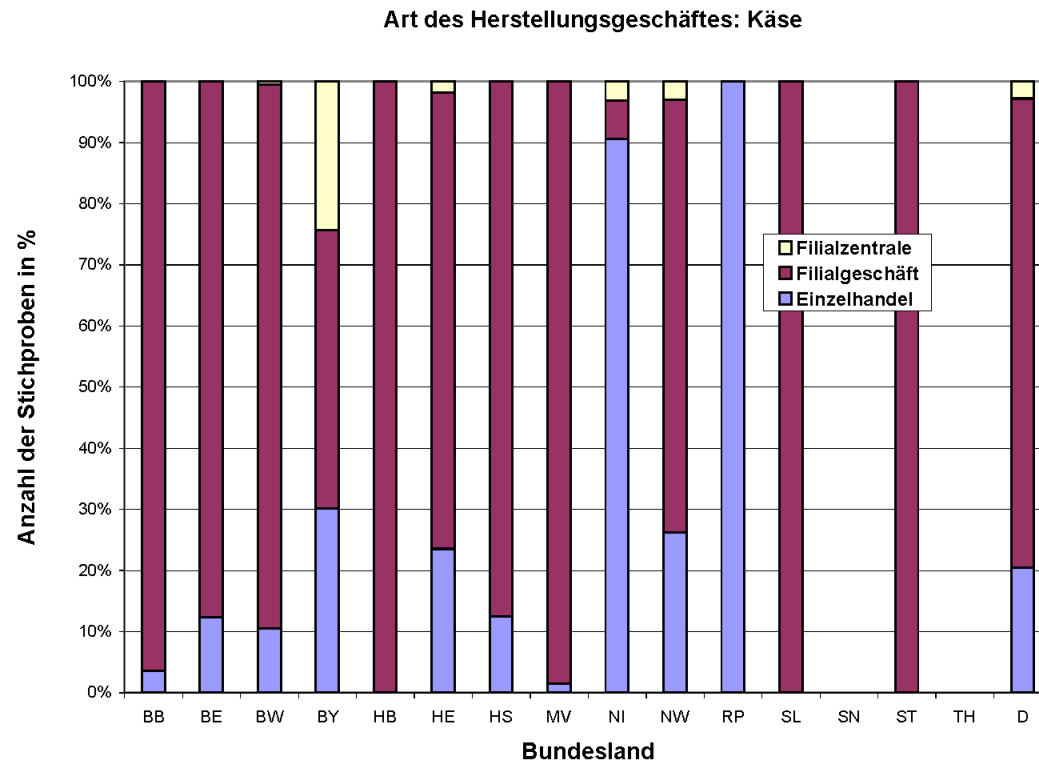
27.09.2006

Catch weight prepackages

LME-Berlin

Prüfungen von Fertigpackungen ungleicher Nennfüllmenge

Abb. 9



Auswertg_D_2005_930.xls

Dia_Pruefort%

27.09.2006

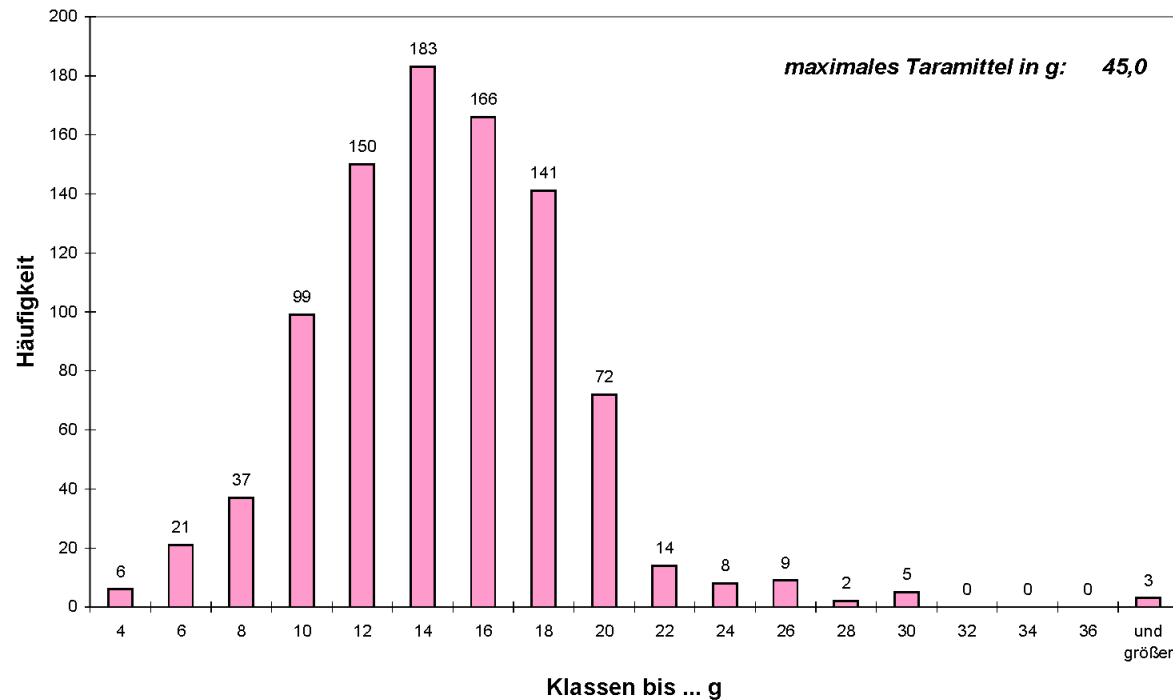
Catch weight prepackages

LME-Berlin

Sonderaktion 2005: Prüfungen von Fertigpackungen ungleicher Nennfüllmenge

Abb. 21

Histogramm Taramittelwerte NW: Fleischwaren



NW_2005_920.xls

Dia_Tara_ID_NW

27.09.2006

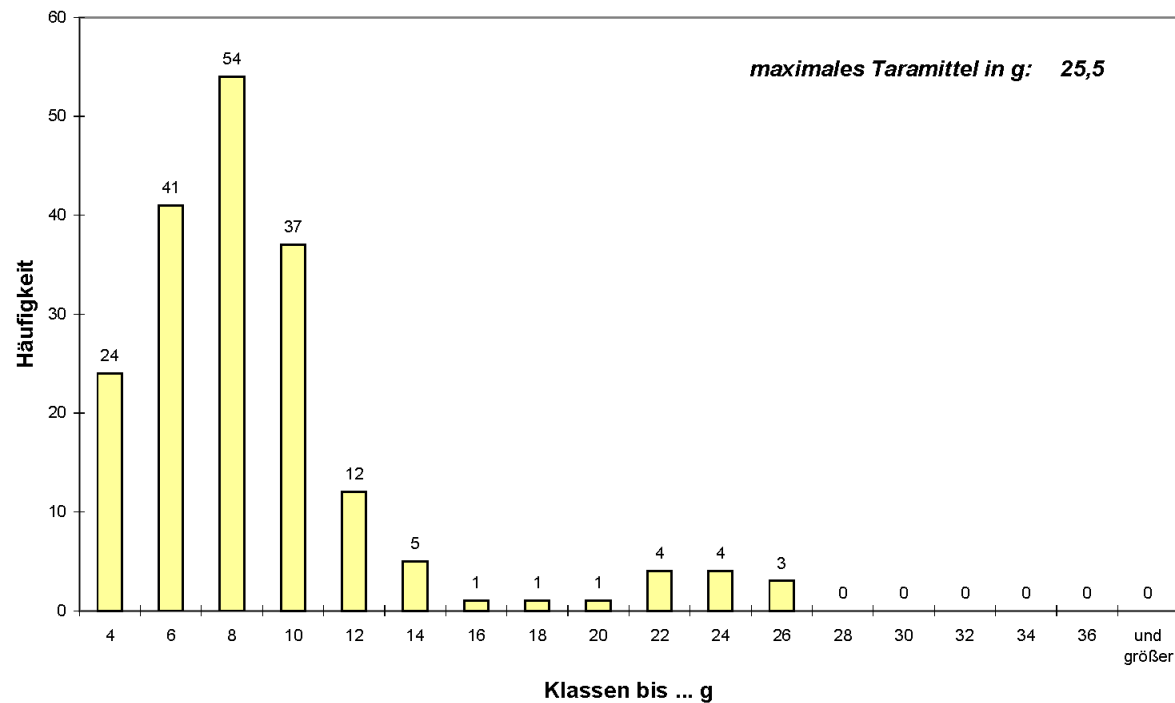
Catch weight prepackages

LME-Berlin

Sonderaktion 2005: Prüfungen von Fertigpackungen ungleicher Nennfüllmenge

Abb. 22

Histogramm Taramittelwerte NW: Käse



NW_2005_930.xls

Dia_Tara_ID_NW

27.09.2006

Catch weight prepackages

The last two foils show that the histogram for the tare of meat is much broader to higher values than that for cheese. The cheese is often packed only in light foil, while for the meat heavier trays, cups ... are used.

→ maximum tare for cheese 26 g

→ maximum tare for meat 45 g !

Catch weight prepackages

For the packing of catchweight prepackages verified instruments must be used. But in practice it is very often the problem at enforcement actions, that it is unknown, which verification scale interval the used weighing instrument had have *and* at which load the instrument was used.

→ Therefore it is appropriate to have error limits for the catchweight prepackages.

It is not opportune to use the error limits for prepackages of constant quantity, because these are too big and for the catchweight prepackages we have **no** average requirement.

Catch weight prepackages

WELMEC WG6 wp 6.12 Leaflet

“Production and Testing of catch weight prepackages”
recommends

Nominal weight (m) in g	maximum negative error in g
$m \leq 100$	1,0
$100 < m \leq 500$	2,0
$500 < m \leq 2000$	5,0
$2000 < m \leq 10000$	10,0

and gives advices for

- **Measuring instruments**
- **Figure height**
- **Reference test by the relevant authority**
- **Record of a reference test of catchweight prepackages**

→ See copy of the text !

Products sold in bulk

Same problem exists for products sold in bulk, where the tare weight is added to the net quantity.



Products sold in bulk

Also for products sold in bulk the tare weight is very often added to the net quantity!

Therefore § 10 a of German Verification Ordinance

Estimation of results of weighing

- For products sold in bulk it is only allowed to calculate the price on the basis of the **net weight**.
- Exemptions are made for products using for further processing ...

“For products sold in bulk it is only allowed to calculate the price on the basis of the net weight.”

Results for ‚gross to net‘ reference tests
as example for Saxony

Year	2011	2010	2009	2008
Number of checks	669	1.055	931	724
Offences	174 (10,8 %)	174 (16,5 %)	121 (13%)	116 (16 %)